



**File Name:** C10ra3 hitachi manual.pdf

**Size:** 2833 KB

**Type:** PDF, ePub, eBook

**Category:** Book

**Uploaded:** 29 May 2019, 18:26 PM

**Rating:** 4.6/5 from 775 votes.

# Download Now!

Please check the box below to proceed.



I'm not a robot



reCAPTCHA  
Privacy - Terms

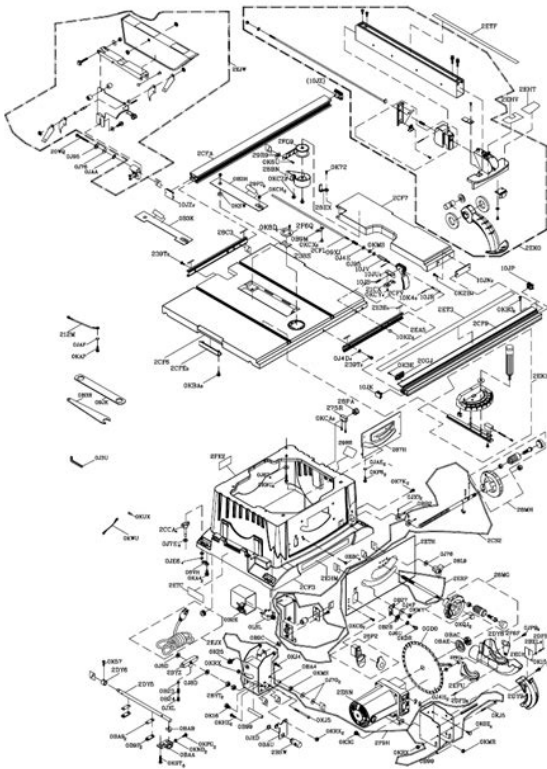
## Book Descriptions:

# C10ra3 hitachi manual



No accounts or sign ups necessary! While you are waiting, you will have the opportunity to The time required is typically tied to the size of the manual. To calculate the overall star rating and percentage breakdown by star, we don't use a simple average. Instead, our system considers things like how recent a review is and if the reviewer bought the item on Amazon. It also analyzes reviews to verify trustworthiness. See All Buying Options Add to Wish List Disabling it will result in some disabled or missing features. You can still see all customer reviews for the product. After using my fathers craftsman table saw for years, I moved out of state and no longer had a table saw at my dispense. I did a lot of research, and was stuck on purchasing a craftsman table saw. After seeing this saw, and its price I decided to take a chance. Hitachi is slowly becoming a big player in power tools. Ive used a couple of their items before roofing nailer, miter saw. I got my saw about a month ago, pulled it out of the box and set it up. I absolutely think this saw is a great value. I purchased a higher end saw blade, and the saw gained even more in value. My saw came missing the two dome nuts for the hand wheels and a slightly bent mounting flange at the rear of the stand. When I called Hitachi customer service and explained the problem they suggested I send the saw back to Amazon for an exchange. The customer service rep said that was Hitachis policy. I have been a contractor for 35 years and buy tons of tools for my business. Stuff happens and I understand that but I guess Hitachi has more customers than they need. They now have one less customer. Mark Update Because Hitachi would not take care of the problem Amazon sent out a new saw and told me to return my first saw after the second one arrived. With the new saw still in the box I set the two saws side by side and as I removed a part from the box I replaced it with a part from the old saw. <http://www.hotpod.net.au/userfiles/delonghi-d500p-manual.xml>

- **hitachi c10ra3 manual, c10ra3 hitachi manual, c10ra3 hitachi manual pdf, c10ra3 hitachi manual download, c10ra3 hitachi manual transmission, c10ra3 hitachi manual downloads.**



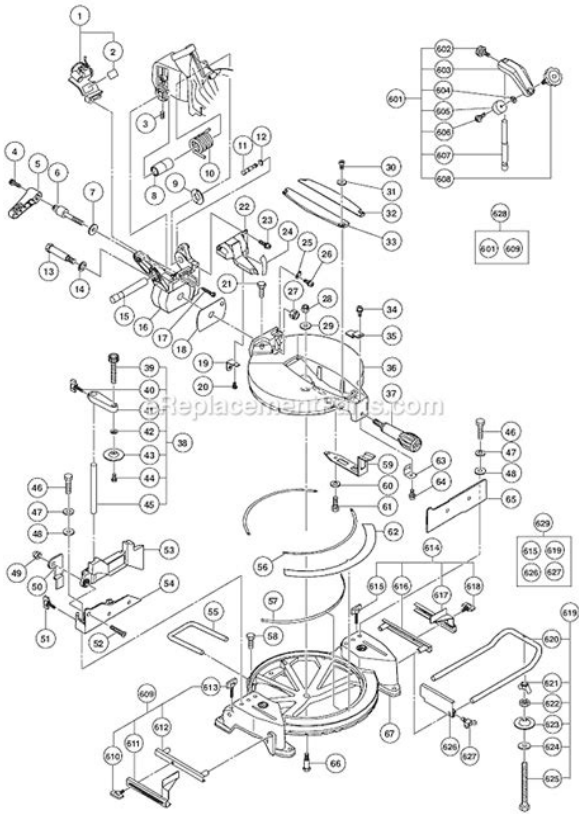
After I was done assembling the second saw I realized it too had some flaws. Between the two saws I had enough parts to make a 95% saw so I shipped the extra saw back to Amazon and ordered a Bosch stand for my Hitachi saw. Now the Bosch stand is the best part of my Hitachi saw. Please try again later. Rando 5.0 out of 5 stars After using my fathers craftsman table saw for years, I moved out of state and no longer had a table saw at my dispense. I did a lot of research, and was stuck on purchasing a craftsman table saw. After seeing this saw, and its price I decided to take a chance. Hitachi is slowly becoming a big player in power tools. Ive used a couple of their items before roofing nailer, miter saw. I got my saw about a month ago, pulled it out of the box and set it up. I absolutely think this saw is a great value. I purchased a higher end saw blade, and the saw gained even more in value. Please try again later. Please try again later. MAY 1.0 out of 5 stars My saw came missing the two dome nuts for the hand wheels and a slightly bent mounting flange at the rear of the stand. When I called Hitachi customer service and explained the problem they suggested I send the saw back to Amazon for an exchange. The customer service rep said that was Hitachis policy. I have been a contractor for 35 years and buy tons of tools for my business. Stuff happens and I understand that but I guess Hitachi has more customers than they need. They now have one less customer. Mark Update Because Hitachi would not take care of the problem Amazon sent out a new saw and told me to return my first saw after the second one arrived. With the new saw still in the box I set the two saws side by side and as I removed a part from the box I replaced it with a part from the old saw. After I was done assembling the second saw I realized it too had some flaws. <http://romangruszecki.com/uploaded/delonghi-convection-toaster-oven-rotisserie-manual.xml>



Between the two saws I had enough parts to make a 95% saw so I shipped the extra saw back to Amazon and ordered a Bosch stand for my Hitachi saw. Now the Bosch stand is the best part of my Hitachi saw. Please try again later. Please try again later. Sam Murphy 5.0 out of 5 stars It might not be a cabinet saw but you also not gonna find a cabinet saw for this price. It has plenty of power and is very accurate. It only took me a few minutes to set it up when I got it. I would definitely buy it again. Please try again later. Please try again later. Betsy 1.0 out of 5 stars The track for the miter gauge is not your standard track, it is apparently unique to Hitachi. So if you want to use a feather board to prevent kickback when ripping stock, you are out of luck. And, of course Hitachi doesn't make a feather board for this saw. For most saws, you can buy a zero clearance throat plate. This is a safety add-on that prevents small thin pieces from getting sucked down into the saw, often jamming up the blade, and scaring the bejesus out of the operator. The table throat insert that comes with the saw does not fit well and causes stock to get hung up as you push it through. And, the design of the saw does not allow the use of a zero clearance plate. The saw cuts well, the stand strong, the fence is junk and the top is aluminum so magnetic safety accessories don't work. Other than that. Please try again later. Please try again later. Positives Adequate results, as long as you don't expect the sawn edge to be smooth. Its affordable and easily capable of more than the factory configuration. Negatives Lots, including the throat plate. I imagine I can shim it up flush, but haven't taken the time yet, and it's nowhere near tight enough for really thin cuts. BTW, a throat plate not flush to the table surface makes measuring the dado depths a royal pain its trial and error, not machine tooling.

Getting the splitter straight to the blade is time consuming and aggravating and especially aggravating because I do so many rabbets and dados. Each one needs the guard off, and therefore were good boys and girls, right back on again, with the same tedious alignment each time. The mechanism doesn't hold the old alignment settings, they have to be redone each time. Also, I found the setup instructions for the table extension grossly inadequate. When I realized that I had not understood the incomprehensible setup instructions correctly, I had to remove one of the end clips and broke it in removing it, because it was engineered only for people who do everything perfectly the first time. Sorry, I'm just human. I know there's an adjustment to get the blade parallel to the miter slot when I get the right measuring tools, I'll try to get all that straight. I'm sure that, with a new blade, a half day of fussing, and a lot of patience, I can get all the results I paid for from this tool. Still, I expect to spend a lot of time making up for my budget limitations. And that guard well, I keep telling myself I really should use it, when applicable, but it keeps arguing against me. Going through all that again, every time I need the guard on again after being off, seems more than daunting. I'm pretty sure the Hitachi lawyers added it to the parts list, not the engineers. I'm not an advanced woodworker, so I'll use this saw and enjoy it, to a point. Still, it will help me look forward to that day when I decide to trade up. Please try again later. Please try again later. Duncan Stowell 2.0 out of 5 stars Portable and lightweight are its strong points with a good size deck. The worst part of this saw is the quality of its EXTREMELY CHEAP BODY, PLASTIC!!! I have gone thru 2 bodies now with cracked, bent, chipped pieces from plastic supports. Don't buy this saw if you live in cold weather





Lastly, as I am now discovering, you cannot upgrade the saw with aftermarket parts i.e. no zero clearance inserts, no riving knives, no splitters, no featherboards, no miter gauges, no jigs, not sure about aftermarket fences, but I am guessing no on that one. You either have to find a way to alter the parts like featherboards because the miter slots on the table saw are not standard making them more expensive, or, you simply build them yourself. Conclusion If you are looking for something simple, ultra portable, and you plan on using it for simple ripping operations or just plan on pulling it out occasionally this is your saw. For beginning furniture makers, this saw will make your entrance into the hobby a little more difficult than other saws would, and you would be best advised to look elsewhere. Please try again later. Please try again later. George A. Kemp, Jr. 1.0 out of 5 stars The motor would cut out. Have to wait for the breaker to come back live. Worst of all is the plastic housing is brittle and it's made with cheap plastic. I lowered the saw to the ground and the legs and housing broke off. Thought I would have this saw for a while but no so much Please try again later. Please try again later. Lori 1.0 out of 5 stars The so called riving knife never lines up with the blade creating a potential scary kickback and couple that with the cheapest fence system I have ever seen, workpieces get jammed up in the middle of a cut. The throat plate is a disaster as well it is almost impossible to get the plate flush with the top which will throw off your square at the end of a cut. DO NOT BUY, buy a Delta or a Jet and save your sanity and money. Please try again later. Please try again later. Products and names mentioned are the property of their respective owners. This page is part of GeneralManual.Com Network Hitachi C10RA3 Jobsite Table Saw User Manual. RSS. Please use the box above to search for any other information. Make sure the switch is not designed. 10.

</images/br-45-admiralty-manual-of-navigation.pdf>



Failure to the table saw, it is recommended. Keep work into the power supply. 14. Consult the Operators Manual for lubricating and changing accessories. 20. Keep tools sharp and clean for this entire Operators Manual.AVOID AWKWARD OPERATIONS and hand positions where a sudden slip could possibly dissolve or otherwise damage the material.Install the dado and dado blade insert. 2. Instruction for operating the dado is tight,.set. 3. The arbor 1 on the arbor nut 3. Compound Miter Saw. C12LCH Saw pdf manual download. Power tool manuals and free pdf instructions. Find the user manual you need for your tools and more at ManualsOnline. View and Download Hitachi C12LSH 12 Dual Bevel Sliding Compound Miter Saw instruction manual online. Slide Compound Miter Saw. Manuals and User Guides for this Hitachi item. Manuals and user guide free PDF downloads for Hitachi C10FCE2 10 Inch Compound Miter Saw. Hitachi Koki Co.,Ltd. HitachiKoki Japan.Instruction manual 72. This Download and Read Hitachi Miter Saw Manuals Hitachi Miter Saw Manuals Spend your few moment to read a book even only few pages.Reload to refresh your session. Reload to refresh your session. Tags mathematics form one Latest Search Queries print driver for optional form 41027 pro form 520 rowing machine federal income tax form 5695 Hitachi C10RA3 10 Inch Portable Table Saw Manual Online Accessories And Attachments, Tools Needed For Assembly, Carton Contents. Learn more about the Hitachi C10RA3 Electric Table Saw before you decide to buy. Download User Guide and Manual. Free download of Hitachi C10RA3 Electric Table Saw User Manual. We have parts, diagrams, accessories and repair advice to make your tool repairs easy. Hitachi C10RA3 10 Inch Portable Table Saw Pdf User Manuals. View online or download Hitachi C10RA3 10 Inch Portable Table Saw Instruction Manual. It is for the rip fence to lock in place.

This would be my last resort before buying the whole thing This would be my last resort before buying the whole thing Login to post I dont know what kind of rip fence you have, but most rip fences are adjustable for squareness. However, unless you have a very nice and expensive rip fence, they often dont selfalign when you move them anyway. If you have the type that clamps at the front and the back of the table, the problem can be overcome by making sure the rip fence is straight before you clamp it in place. The easiest way I have found to do that is to use an adjustable square. Put the front of the rip fence where you want it, then set the adjustable square so that it matches the distance from the miter slot in the table to the fence. Then move the square to the back of the table and move the back of the fence to meet the end of the square. Now clamp it in place and check the front and the back one more time. Its tedious to do this every time you adjust the fence, but you can get a perfectly aligned fence this way. This method assumes that your blade is parallel to your miter slots, which is adjustable too, but you have to get underneath the saw to do that.Al KThe rip fence will not lock into place anymore. Where can I obtain a diagram of the parts and how they are assembled Hope this helpsThis is the Hitachi C10RA3 table saw You can right click on it to download or left cleck to view it and print it.If it jams toward the back of the saw the guide might not be square with the blade. I would unplug it and put something that you know is square on the front edge of the blade away from the teeth and adjust the fence so that it is just snub then lock down the table and move the square to the back of saw, it should move with no resistance. If it does then the fence is out.

<https://pikewallis.no/wp-content/plugins/formcraft/file-upload/server/content/files/1626e5eb6a6b91---40-mm-manual-lens.pdf>

What you would need to do if this is the case is align the fence to the blade, on the back of the saw are 2 10MM bolts that you need to loosen put your square at the front again and lock down the handle with that done move the square to the back and tap the rail on the back side to move tighter or looser and then lock down the bolts. What I do is move the fence away and then back and start all over again to make sure nothing shifted. It sounds more involved than it is. Let me know if this cures your problem This is done by turning the two allen set screws mounted in the angle iron that is welded to the fence. There are a couple of tabs that ride along the inside face of the rect tube when the fence slides from side to side. Youll see that each of these tabs is adjustable, in or out, by slightly turning the allen set screws with an allen wrench. BOTH of these must be adjusted, so that you maintain the fences squareness to the table. What I do is line up the edge of the fence with the mitre slot in the saw table, feeling the edge of the fence as it hangs over the edge of the mitre slot, both at the infeed and outfeed end of the slot. It should be perfectly flush at both ends. By turning the set screws in or out a little, you can adjust the handle tension to the place where you like it you dont need to force it into position to have it hold firmly; thats too tight. Then check the squareness of the fence by clamping it down along the edge of the mitre jig slot, and see if its parrallel. If not, you need to adjust one or both screws to make it parrallel, and get the tension right. You may have to go back and forth a few times, but eventually you can dial it in to where it feels just right and the alignment is correct. Think small adjustments. At the same time, put a little dab of wheel bearing grease or vaseline on the cam of the fence handle where it rubs against that little flap.

<aothuatdanang.com/upload/files/8850-service-manual.pdf>

This will make it easier to engage when the tension is firm and keep it from wearing abrasively. This fence is a joy to use when its dialed in. I hope you find this information helpful. Happy woodworking! Have you ever heard of this type of problem No blockages of blade. Reset not working no start after 12 hours off. Answer questions, earn points and help others. Quality was bad. Consider Makita. Parts are available to repair the one you have Would appreciate some help Sometimes a piece of wood or plastic lodges itself in between and is hard to see. No blockages of blade. Reset not working no start after 12 hours off. Internal breaks in the power cord is a common problem with tools and appliances and is a good place to begin. Removed caps on sides of motor housing with no problems. The brushes will not come out, scared to pull on springs to hard. Suggestions please! Maybe try turning the blade backwards while pulling on the brushes. Can you help me find one, even if it is used Bevel setting reads 0 degrees but it is not. Im trying to install baseboards. How to fix There are usually adjustable stops and often moveable scales so when checked against known accurate squares and angles suitable adjustments can be made. Sometimes the stops arent adjustable and metal must be removed by filing or added by bonding a suitable shim. One point of concern with many saws of the type is the position of the handle is often offset from the centre line of the pivot with the result; the force needed to overcome the resistance of the return spring is also offset and tends to twist the mechanism during the cut the typical mechanism is not usually strong enough or built with sufficient precision to completely resist the twisting force which often results in a less than accurate cut even though the angle has been accurately set. Knowing this the user can compensate by holding the handle differently or applying a twisting force in the opposite direction.

With practice you will become familiar with the tool. When I hit the on switch, it will only stay on as long as I hold the on switch. WTH Bad switch Or is it me Did you you use ket The overload is a safety device to prevent motor damage, you may have made things worse by holding reset in. It worked intermittently in year six, then eventually stopped working. Is there a solution Un plug, remove trigger assembly and tie wires together. Plug in and saw should run constantly. If this works buy trigger assembly and replace. Wrap all exposed copper wires with electrical tape before plugging in.



Green and bare copper wires are left alone. Angle cuts 90,45,etc still accurate. How do I realign blade run to avoid hitting turntable I used engineer squares. It doesn't work. Are there repair parts available or instructions on how to fix it It doesn't work. If they are open "OL" then the switch is bad on the laser. It tried to start ran at very slow speed the would no start again. It is now dead. There is power to the switch. Can you recommend what to do next Answer questions, earn points and help others.

<http://www.drupalitalia.org/node/78983>